

# How Open Source Unlocks Human Potential



**Dinko Eror**

VP EMEA Central Region  
Red Hat

# Commitments



**1** Innovation



**2** Countries



**3** Open Source & Collaboration

.MMM . . :MMMMMMM  
MMMMMMMMMMMMMMMMMMMMMMMM  
MMMMMMMMMMMMMMMMMMMMMMMM .  
MMMMMMMMMMMMMMMMMMMMMMMM  
MMMMMMMMMMMMMMMMMMMMMMMM :  
MMMMMMMMMMMMMMMMMMMMMMMM  
MMMMMMMMMMMMMMMMMMMMMMMM  
`MMMMMMMMMMMMMMMMMMMMMMMM .  
    MMMMMMMMMMMMMMMMMMMMMMMM .  
        `MMMMMMMMMMMMMMMMMMMMMMMM` MM .  
1.   MMMM  
MMMM .   ,MMMMM .  
MMMMMMMMMMMM .   ,MMMMMMMM .  
MM  
MM :  
MM  
`MM :  
    `MM`

3.9 million

1 million

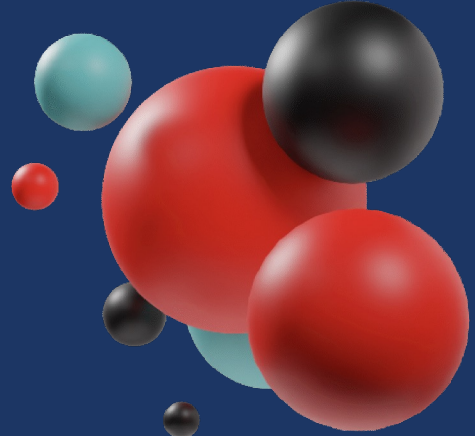
76%

33% < 24

1710 / 1715

30 million

2 million



# Our announcements last year



## Red Hat Developer Hub

Centralized, open portal for streamlined cloud-native development.



## Trusted Software Supply Chain

New CI/CD and security services.



## ACS Cloud Service

Expanded Kubernetes-native security.



## Ansible Lightspeed

with IBM Watson Code Assistant:  
Enables generative AI in automation.



## RHEL Insights

Enhanced Linux management and predictive analytics



## Event-Driven Ansible

Automation triggered by real-time events.



## Service Interconnect

Simplified app connectivity across hybrid clouds.



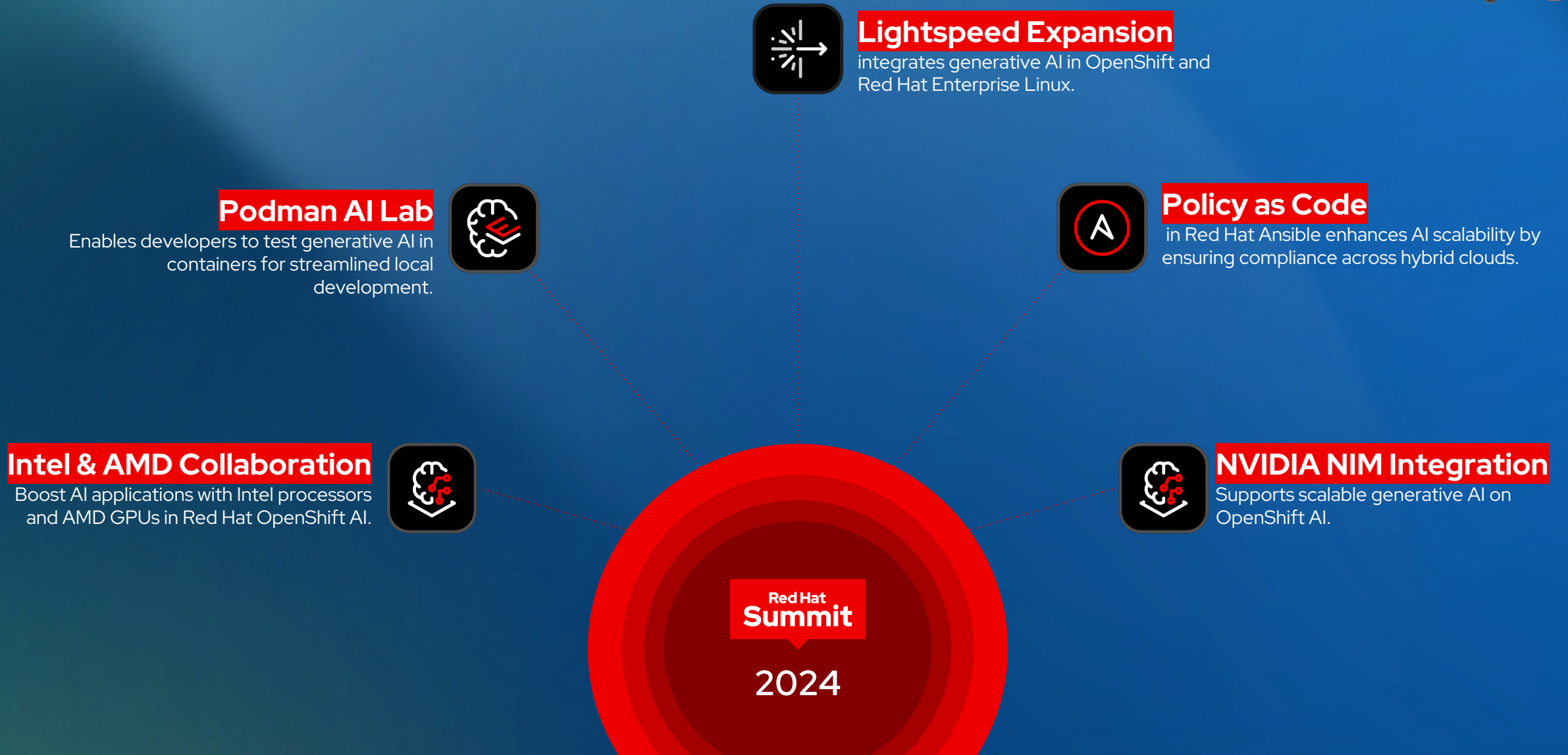
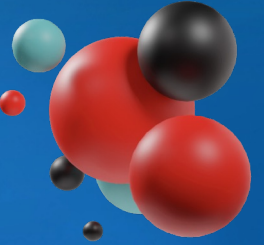
## OpenShift AI

Enhanced AI/ML workflows and model performance.

Red Hat  
Summit

2023

# We are not standing still...





Red Hat's **educational** donation worldwide: > **\$4.2 million**

Red Hatters personal donation to nonprofits : **\$925,000**

Charity



Red Hat **decreased** Energy intensity per FTE **by 34%**

Red Hat joined **OS-Climate** to build open source tools for climate impact in finance

Sustainability



**4,000+ hours** to open source science & educational projects  
Red Hat technology solves **societal problems through open source**



Open Source

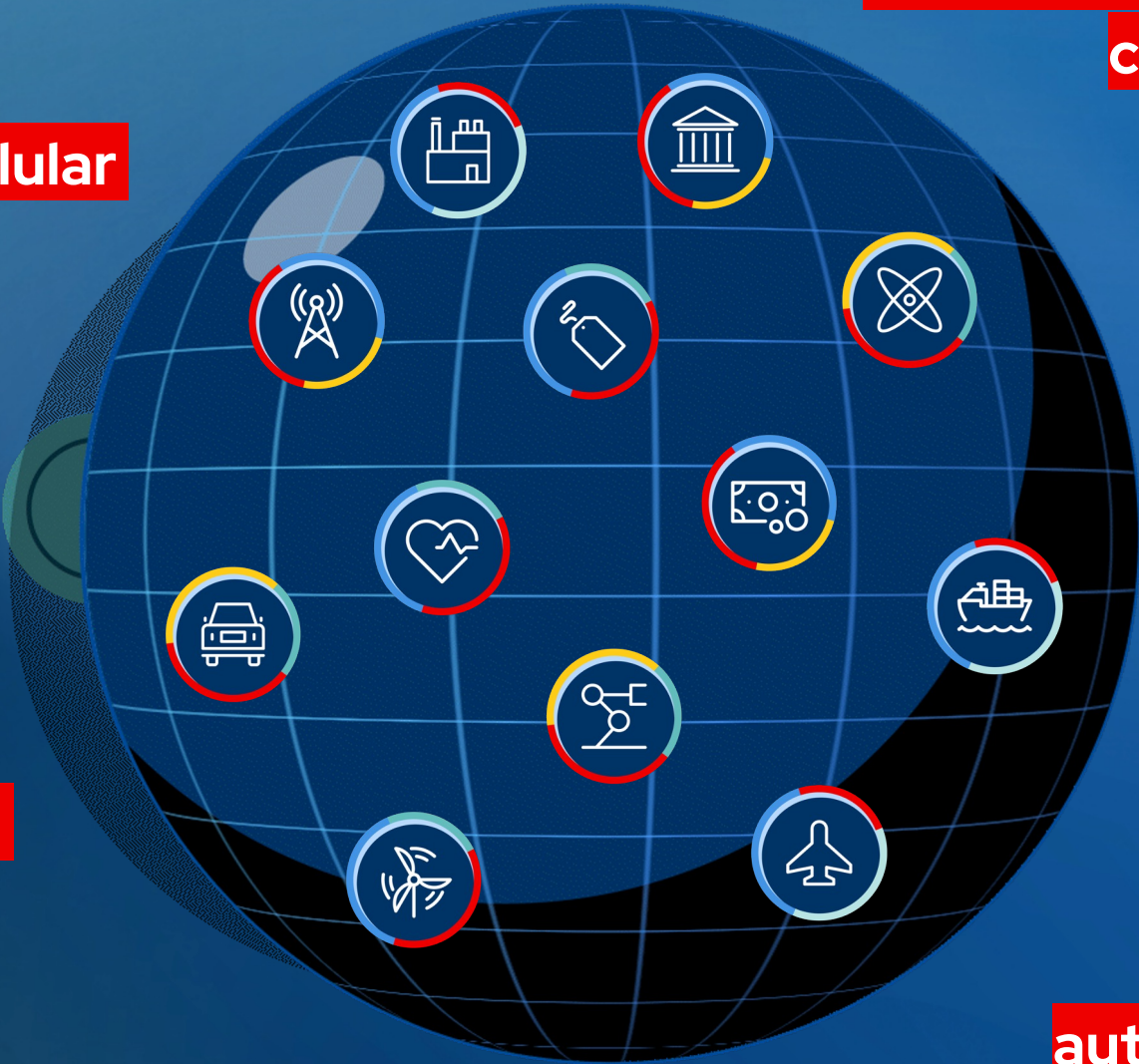
**Millions of 5G cellular calls and texts**

**Governments delivering critical services**

**Millions of financial transactions**

**Advancements in healthcare**

**Planes, trains and automobiles being safe**



It starts with culture





Human



Artificial

